



**Installation guide**  
**Software installation for netANALYZER devices**  
**Installing driver and analyzer software**  
**netANALYZER Scope DVD 01-2017**

**Hilscher Gesellschaft für Systemautomation mbH**  
**[www.hilscher.com](http://www.hilscher.com)**

DOC150201IG04EN | Revision 04 | English | 2017-05 | Released | Public

# Table of Contents

<b>1</b>	<b>Introduction</b> .....	<b>3</b>
1.1	About the user manual .....	3
1.1.1	Which software for which purpose? .....	3
1.1.2	List of revisions .....	4
1.1.3	Conventions in this manual .....	5
1.2	Content of the netANALYZER Scope DVD .....	6
1.2.1	Directory structure of the DVD .....	6
1.2.2	Firmware, driver and software versions .....	7
1.2.3	Documentation .....	8
1.2.4	What's new netANALYZER and netANALYZER Scope .....	8
1.3	Legal notes .....	9
1.4	Registered trademarks .....	12
<b>2</b>	<b>Requirements</b> .....	<b>13</b>
2.1	Software requirements .....	13
2.2	Commissioning requirements .....	14
2.3	Installation notes .....	14
<b>3</b>	<b>Getting started</b> .....	<b>15</b>
3.1	Overview Software installation .....	15
3.2	Overview software installation update .....	16
<b>4</b>	<b>Installation netANALZER Scope</b> .....	<b>17</b>
4.1	Auto boot menu .....	17
4.2	First-Time Installation .....	18
4.3	Update installation .....	24
4.4	Uninstalling .....	29
	<b>Glossary</b> .....	<b>35</b>
	<b>Contacts</b> .....	<b>36</b>

# 1 Introduction

## 1.1 About the user manual

This user manual contains descriptions for software installation for the netANALYZER PC card NANL-C500-RE and netANALYZER device NANL-B500G-RE.

The installation of the netANALYZER Scope software or driver required for the netANALYZER devices includes the following components:

- Ethernet Device Configuration Tool (only for NANLB500G),
- **netANALYZER / netSCOPE Device Driver**,
- **netANALYZER Remote Access Window client** (only for NANL B500G) and
- **netANALYZER Scope** software as well as the **netANALYZER** software.
- A suitable **WinPcap driver** to allow ot use a netANALYZER card or device in a network monitoring program as a recording device.

### 1.1.1 Which software for which purpose?

- If you are a new user of netANALYZER devices, it is recommended:
  - For pure Ethernet frame recordings use **Wireshark** (with the included WinPcap driver), to use your netANALYZER device directly in Wireshark as recording hardware.
  - For graphical analysis, or for users with high performance requirements, it is recommended to use the extended software **netANALYZER Scope**.
- If you have already used the netANALYZER software and you do not require the extended scope of functions of netANALYZER Scope, the **netANALYZER software** is still available on the netANALYZER Scope DVD. Note that the netANALYZER software is no longer maintained and therefore should only be used to a limited extent.

## 1.1.2 List of revisions

Index	Date	Chapter	Revisions
1	15-02-24	All	created
2	17-01-25	All	Revised
3	17-02-23	1.3, 2	Product DVD as a ZIP file from the website <a href="http://www.hilscher.com">www.hilscher.com</a> section <i>Legal notes</i> [▶ page 9] updated. Chapter <i>Requirements</i> [▶ page 13] updated (internet access is required).
4	17-05-22	1.2.2, 2.3, 3.1, 4.2	Section <i>Firmware, driver and software versions</i> [▶ page 7]: New version NANL-B500G-RE firmware update nani-b500g-re.update <b>1.5.x.x</b> Sections <i>Installation notes</i> [▶ page 14], <i>Overview Software installation</i> [▶ page 15] and <i>First-Time Installation</i> [▶ page 18]: Installation notes added.

Table 1: List of revisions

### 1.1.3 Conventions in this manual

Notes, instructions and results of operating steps are marked as follows:

#### Notes



---

**Important:**

<important note you must follow to avoid malfunction>

---



---

**Note:**

<general note>

---



---

<note where to find further information>

---

#### Instructions

1. Operation purpose
2. Operation purpose
  - Instruction

#### Results

↻ Intermediate result

⇒ Final result

#### Safety messages

The labeling of safety messages is explained in the chapter Safety.

## 1.2 Content of the netANALYZER Scope DVD

The netANALYZER Scope DVD as a ZIP file can be downloaded and unzipped to your local hard drive from the website <http://www.hilscher.com> (under **Products**, directly with the information on your product). The DVD contains all the necessary drivers, software components and the documentation for the NANL-C500-RE analyzer card and the NANL-B500G-RE analyzer:

- Setup for
  - netANALYZER Scope
  - Setup netANALYZER / netSCOPE Device Driver for 32bit and für 64 bit netANALYZER software
  - Lizencens Manager
  - Ethernet Device Configuration Tool
  - WinPcap driver
  - etc.
- Firmware update file for analyzer device NANL-B500G-RE
- Documentation (about License Manager, netANALYZER Scope, netANALYZER software, as well as about hardware, driver and software installation) and video podcast featuring commissioning example
- Example projects for netANALYZER Scope and examples for the netANALYZER Application Programming Interface (API)

### 1.2.1 Directory structure of the DVD

Directory name	Description
Root directory	Autostart menu ( <i>netAnalyzer-Scope.exe</i> )
Documentation	Documentation in Acrobat® Reader format (PDF), Adobe Flash Player installation program, video information in AVI format.
Examples	Application examples for netANALYZER Scope and two programming examples for the programming interface (API) for the analyzer card NANL-C500-RE and the analyzer device NANL-B500G-RE.
fsccommand	Help files for the installation program.
NANL-B500G-RE firmware update	nanl-b500g-re.update
Setup	Installer which installs the individual subcomponents ( <i>setup.exe</i> )

Table 2: Directory structure of the netANALYZER Scope DVD

## 1.2.2 Firmware, driver and software versions

Name	File name	Version	Path
Hilscher netANALYZER Scope setup	Hilscher.netAnalyzer.Scope.msi	2.5.x.x	Setup
netANALYZER / netSCOPE Device Driver (device driver) 32-Bit	netANALYZER - netSCOPE Driver x86.msi	1.6.x.x	
netANALYZER / netSCOPE Device Driver (device driver) 64-Bit	netANALYZER - netSCOPE Driver x64.msi	1.6.x.x	
Ethernet Device Configuration Tool	EnDevConfigTool.msi	1.9.x.x	
Lizences Manager	LicenseManager.msi	1.2.x.x	
Remote Access client (only for analyzer device NANL-B500G-RE)	netANALYZER Remote Access Windows Client.exe	1.8.x.x	
WinPcap driver	WinPcap-4.1.3-5-for-netANALYZER.exe	4.1.3-5	
Hilscher netANALYZER setup	netAnalyzer.msi	1.0501.x.x	NANL-B500G-RE firmware update
NANL-B500G-RE firmware update	nanl-b500g-re.update	1.5.x.x	

Table 3: Installation files for software, drivers on the DVD

Name	File name	Version	Path
netANALYZER Scope software	Hilscher.netAnalyze r.ProcessScope.exe	2.5.x.x	C:\Programs\Hilscher GmbH\netANALYZER Scope 2
netANALYZER firmware	NANL-500.nxf	1.6.x.x	C:\Programs \netANALYZER Device Driver\...
netANALYZER / netSCOPE Device Driver	NSCP-100.nxf	1.6.x.x	
netANALYZER toolkit			

Table 4: Installed files (software application, firmware, driver, toolkit)

## 1.2.3 Documentation

The following overview gives information on the documentation provided on the netANALYZER Scope DVD.

Manual	Content	File name	DocumentID
User manual, netANALYZER devices	Installation, operation and hardware description	netANALYZER UM XX EN.pdf	DOC091110UMXXEN
User manual, netANALYZER Scope licensing	Overview	netANALYZER Scope licensing UM XX EN.pdf	DOC091110UMXXEN
Installation guide, Software installation for netANALYZER devices (this document)	Installing driver and analyzer software	netANALYZER software installation IG 01 EN.pdf	DOC150201IGXXEN
Driver Manual, netANALYZER API, Windows XP/Vista/7/8, V1.x	Description of the netANALYZER API	netANALYZER API Windows DRV XX EN.pdf	DOC091113DRVXXEN
User manual, Ethernet Device Configuration	Addresssetting for Ethernet capable Hilscher devices	Ethernet Device Configuration OI XX EN.pdf	DOC050402OIXXEN
Operating instructions manual, netANALYZERScope	Data acquisition and analysis, V2.5	netANALYZER Scope OI XX EN.pdf	DOC131002OIXXEN
Operating Instruction Manual, Hilscher License Manager	Description for software licensing, V1.x.x.x	License manager OI XX EN.pdf	DOC131201OIXXEN
Revision list What's new netANALYZER Scope	netANALYZER Scope DVD	What's new netANALYZER Scope DVD RL XX EN.pdf	DOC150202RLXXEN
Operating Instruction Manual netANALYZER Software	Data acquisition and analysis	netANALYZER Software OI XX EN.pdf	DOC150304OIXXEN

Table 5: Documentations on the netANALYZER Scope DVD

These documentations can be found on the netANALYZER Scope DVD under the **Documentation** directory in the Adobe Acrobat® Reader format (PDF).



### Note:

You can download the latest edition of your manual at [www.hilscher.com](http://www.hilscher.com). Select **Products**, search your product and select **Downloads**.

## 1.2.4 What's new netANALYZER and netANALYZER Scope



All current version information for hardware and software described in this manual are provided in the folder *\Documentation\ What's New netANALYZER DVD RL XX EN.pdf* on the netANALYZER DVD.

All current version information for the netANALYZER Scope software are provided in the folder *\Documentation\ What's New netANALYZER Scope DVD RL XX EN.pdf* on the netANALYZER Scope DVD.



## 1.3 Legal notes

### Copyright

© Hilscher Gesellschaft für Systemautomation mbH

All rights reserved.

The images, photographs and texts in the accompanying materials (in the form of a user's manual, operator's manual, Statement of Work document and all other document types, support texts, documentation, etc.) are protected by German and international copyright and by international trade and protective provisions. Without the prior written consent, you do not have permission to duplicate them either in full or in part using technical or mechanical methods (print, photocopy or any other method), to edit them using electronic systems or to transfer them. You are not permitted to make changes to copyright notices, markings, trademarks or ownership declarations. Illustrations are provided without taking the patent situation into account. Any company names and product designations provided in this document may be brands or trademarks by the corresponding owner and may be protected under trademark, brand or patent law. Any form of further use shall require the express consent from the relevant owner of the rights.

### Important notes

Utmost care was/is given in the preparation of the documentation at hand consisting of a user's manual, operating manual and any other document type and accompanying texts. However, errors cannot be ruled out. Therefore, we cannot assume any guarantee or legal responsibility for erroneous information or liability of any kind. You are hereby made aware that descriptions found in the user's manual, the accompanying texts and the documentation neither represent a guarantee nor any indication on proper use as stipulated in the agreement or a promised attribute. It cannot be ruled out that the user's manual, the accompanying texts and the documentation do not completely match the described attributes, standards or any other data for the delivered product. A warranty or guarantee with respect to the correctness or accuracy of the information is not assumed.

We reserve the right to modify our products and the specifications for such as well as the corresponding documentation in the form of a user's manual, operating manual and/or any other document types and accompanying texts at any time and without notice without being required to notify of said modification. Changes shall be taken into account in future manuals and do not represent an obligation of any kind, in particular there shall be no right to have delivered documents revised. The manual delivered with the product shall apply.

Under no circumstances shall Hilscher Gesellschaft für Systemautomation mbH be liable for direct, indirect, ancillary or subsequent damage, or for any loss of income, which may arise after use of the information contained herein.

### Liability disclaimer

The hardware and/or software was created and tested by Hilscher Gesellschaft für Systemautomation mbH with utmost care and is made available as is. No warranty can be assumed for the performance or flawlessness of the hardware and/or software under all application conditions and scenarios and the work results achieved by the user when using the hardware and/or software. Liability for any damage that may have occurred as a result of using the hardware and/or software or the corresponding documents shall be limited to an event involving willful intent or a grossly negligent violation of a fundamental contractual obligation. However, the right to assert damages due to a violation of a fundamental contractual obligation shall be limited to contract-typical foreseeable damage.

It is hereby expressly agreed upon in particular that any use or utilization of the hardware and/or software in connection with

- Flight control systems in aviation and aerospace;
- Nuclear fusion processes in nuclear power plants;
- Medical devices used for life support and
- Vehicle control systems used in passenger transport

shall be excluded. Use of the hardware and/or software in any of the following areas is strictly prohibited:

- For military purposes or in weaponry;
- For designing, engineering, maintaining or operating nuclear systems;
- In flight safety systems, aviation and flight telecommunications systems;
- In life-support systems;
- In systems in which any malfunction in the hardware and/or software may result in physical injuries or fatalities.

You are hereby made aware that the hardware and/or software was not created for use in hazardous environments, which require fail-safe control mechanisms. Use of the hardware and/or software in this kind of environment shall be at your own risk; any liability for damage or loss due to impermissible use shall be excluded.

### Warranty

Hilscher Gesellschaft für Systemautomation mbH hereby guarantees that the software shall run without errors in accordance with the requirements listed in the specifications and that there were no defects on the date of acceptance. The warranty period shall be 12 months commencing as of the date of acceptance or purchase (with express declaration or implied, by customer's conclusive behavior, e.g. putting into operation permanently).

The warranty obligation for equipment (hardware) we produce is 36 months, calculated as of the date of delivery ex works. The aforementioned provisions shall not apply if longer warranty periods are mandatory by law pursuant to Section 438 (1.2) BGB, Section 479 (1) BGB and Section 634a (1) BGB [Bürgerliches Gesetzbuch; German Civil Code] If, despite of all due care taken, the delivered product should have a defect, which already

existed at the time of the transfer of risk, it shall be at our discretion to either repair the product or to deliver a replacement product, subject to timely notification of defect.

The warranty obligation shall not apply if the notification of defect is not asserted promptly, if the purchaser or third party has tampered with the products, if the defect is the result of natural wear, was caused by unfavorable operating conditions or is due to violations against our operating regulations or against rules of good electrical engineering practice, or if our request to return the defective object is not promptly complied with.

### **Costs of support, maintenance, customization and product care**

Please be advised that any subsequent improvement shall only be free of charge if a defect is found. Any form of technical support, maintenance and customization is not a warranty service, but instead shall be charged extra.

### **Additional guarantees**

Although the hardware and software was developed and tested in-depth with greatest care, Hilscher Gesellschaft für Systemautomation mbH shall not assume any guarantee for the suitability thereof for any purpose that was not confirmed in writing. No guarantee can be granted whereby the hardware and software satisfies your requirements, or the use of the hardware and/or software is uninterrupted or the hardware and/or software is fault-free.

It cannot be guaranteed that patents and/or ownership privileges have not been infringed upon or violated or that the products are free from third-party influence. No additional guarantees or promises shall be made as to whether the product is market current, free from deficiency in title, or can be integrated or is usable for specific purposes, unless such guarantees or promises are required under existing law and cannot be restricted.

### **Confidentiality**

The customer hereby expressly acknowledges that this document contains trade secrets, information protected by copyright and other patent and ownership privileges as well as any related rights of Hilscher Gesellschaft für Systemautomation mbH. The customer agrees to treat as confidential all of the information made available to customer by Hilscher Gesellschaft für Systemautomation mbH and rights, which were disclosed by Hilscher Gesellschaft für Systemautomation mbH and that were made accessible as well as the terms and conditions of this agreement itself.

The parties hereby agree to one another that the information that each party receives from the other party respectively is and shall remain the intellectual property of said other party, unless provided for otherwise in a contractual agreement.

The customer must not allow any third party to become knowledgeable of this expertise and shall only provide knowledge thereof to authorized users as appropriate and necessary. Companies associated with the customer shall not be deemed third parties. The customer must obligate authorized

users to confidentiality. The customer should only use the confidential information in connection with the performances specified in this agreement.

The customer must not use this confidential information to his own advantage or for his own purposes or rather to the advantage or for the purpose of a third party, nor must it be used for commercial purposes and this confidential information must only be used to the extent provided for in this agreement or otherwise to the extent as expressly authorized by the disclosing party in written form. The customer has the right, subject to the obligation to confidentiality, to disclose the terms and conditions of this agreement directly to his legal and financial consultants as would be required for the customer's normal business operation.

### **Export provisions**

The delivered product (including technical data) is subject to the legal export and/or import laws as well as any associated regulations of various countries, especially such laws applicable in Germany and in the United States. The products / hardware / software must not be exported into such countries for which export is prohibited under US American export control laws and its supplementary provisions. You hereby agree to strictly follow the regulations and to yourself be responsible for observing them. You are hereby made aware that you may be required to obtain governmental approval to export, reexport or import the product.

## **1.4 Registered trademarks**

Windows® 7, Windows® 8 and Windows® 10 are registered trade marks of the Microsoft Corporation.

Wireshark® and the "fin" logo are a registered trademark of Gerald Combs.

Adobe-Acrobat® is a registered trademark of the Adobe Systems Incorporated.

All other mentioned trademarks are property of their respective legal owners.

## 2 Requirements

In order to download the product DVD, you need an Internet access.

### 2.1 Software requirements

#### 1. Software requirements for netANALYZER devices

- The netANALYZER Scope software V 2.5.x.x must be installed. This includes the analyzer driver and the analyzer firmware "Ethernet Analyzer".
- In order to display the recorded data contents, a network monitoring program must be installed which supports the WinPcap format, such as Wireshark.
- The WinPcap driver included on the netANALYZER Scope DVD must be installed and must not be overwritten. Otherwise, your netANALYZER device is not available as a recording device in the network monitoring program installed on your PC.

Only for analyzer device NANL-B500G-RE:

- The Remote Access Client must be installed.
- The Ethernet Device Configuration program must be installed.

The system requirements for the analysis software netANALYZER are contained in the operating instruction manual netANALYZER software.

#### 2. Requirements for netANALYZER Scope

Operating system:

- Windows® 7, (32-bit und 64-bit version)
- Windows® 8, (32-bit und 64-bit version)
- Windows® 10, (32-bit und 64-bit version)

Additional software requirements

- Microsoft .NET Framework 4.6
- Microsoft Visual C++ 2008 Redistributable Package
- Microsoft Visual C++ 2010 Redistributable Package
- Microsoft Visual C++ 2015 Redistributable Package
- Microsoft DirectX 9.0c
- netANALYZER Driver

These additionally required software components are included within the setup of netANALYZER Scope and are automatically installed, if necessary.

## 2.2 Commissioning requirements

- System requirements: PC or notebook with Intel compatible CPU  $\geq 2$  GHz,  $\geq 1$  GB RAM,  $\geq 2$  GB HDD free, free PCI V2.3/33 MHz slot or Gigabit Ethernet 1000BASE-T RJ45 connector
- Operating system: See section *Software requirements* [► page 13]
- Monitor resolution:  $\geq$  SVGA 1024 x 768, 16-bit color depth
- Analyzer PC card NANL-C500-RE or analyzer device NANL-B500G-RE available
- netANALYZER Scope license activated in recording hardware (otherwise only evaluation mode available)
- netANALYZER Scope software installed (or possibly netANALYZER software)

## 2.3 Installation notes

- After some installation steps, e. g. after the installation of the .NET Framework, a restart of the PC may be required, before the other software components can be installed.
- If necessary, an Internet connection is required during installation if some of the required Windows components are not yet available.

## 3 Getting started

### 3.1 Overview Software installation

No	Step	Description	Chapter / Section / Documentation
<b>1.</b>	<b>Software installation</b>		
1.1	Requirements	Observe the requirements	<i>Requirements</i> [▶ page 13]
1.2	Installation notes	After some installation steps, e. g. after the installation of the .NET Framework, a restart of the PC may be required, before the other software components can be installed.  If necessary, an Internet connection is required during installation if some of the required Windows components are not yet available.	<i>Installation notes</i> [▶ page 14]
1.3	Download and unzip DVD. Open autostart menu.	- Download the netANALYZER Scope-DVD as ZIP file to the local hard disk of your PC. - Unzip the ZIP file. - Double-click the *.exe file in the root directory of the DVD to open the Autostart menu.	<i>First-Time Installation</i> [▶ page 18]
1.4	Autostart menu	- Select <b>Install Scope Software</b> in the startup menu.	
1.5	Select settings for components	- For the components <b>netANALYZER / netScope device driver</b> and for the <b>netANALYZER Scope</b> software to be installed select <b>Install</b> in the installation dialog. Possibly select the <b>netANALYZER</b> component (stands for netANALYZER software).  <b>Note!</b> For the analyzer device NANL-B500G-RE the <b>netANALYZER Remote Access Windows Client</b> and the program <b>Ethernet Device Configuration</b> must be installed. Weiterhin benötigen Sie für die Lizenzanfrage für die Lizenzierung Ihrer netANALYZER Scope-Software das Programm <b>Hilscher License Manager</b> .  <b>Note:</b> Make sure to install the WinPcap driver provided on the DVD, to allow to use your netANALYZER device with a network monitoring program (e. g., Wireshark).	
1.6	Accept license agreement	- Check <b>I accept the terms in the License agreement</b> .	
1.7	Perform installation	- Click <b>Apply</b> . - Answer query with <b>OK</b> and close all applications. - Answer Windows safety query by <b>Yes</b> . - The installation runs. - Click <b>Finish</b> .	
<b>2.</b>	<b>Hardware installation</b>		User manual netANALYZER devices

Table 6: Overview Installation netANALYZER Scope software, or netANALYZER software

## 3.2 Overview software installation update

No	Step	Description	Chapter / Section / Documentation
1.	<b>Update driver and software</b>		<i>Update installation</i> [▶ page 24]
1.1	Download and unzip DVD. Open autostart menu.	<ul style="list-style-type: none"> <li>- Download the netANALYZER Scope-DVD as ZIP file to the local hard disk of your PC.</li> <li>- Unzip the ZIP file.</li> <li>- Double-click the *.exe file in the root directory of the DVD to open the Autostart menu.</li> </ul>	
1.2	Autostart menu	- Select <b>Install Scope Software</b> in the startup menu.	
1.3	Select settings for components	<ul style="list-style-type: none"> <li>- Select <b>Update</b> in the installation dialog for the components to be updated.</li> </ul> <p><b>Note!</b> For the analyzer device NANL-B500G-RE the <b>netANALYZER Remote Access Windows Client</b> and the program <b>Ethernet Device Configuration</b> must be installed.</p>	
1.4	Accept license agreement	- Check <b>I accept the terms in the License agreement.</b>	
1.5	Perform update	<ul style="list-style-type: none"> <li>- Click <b>Apply</b>.</li> <li>- Answer query with <b>OK</b> and close all applications.</li> <li>- Answer Windows safety query by <b>Yes</b>.</li> <li>- The update is performed.</li> <li>- Click <b>Finish</b>.</li> </ul>	

Table 7: Overview software and driver



## 4 Installation netANALYZER Scope

### 4.1 Auto boot menu

For the software installation for your netANALYZER device the netANALYZER Scope DVD contains the netANALYZER / netSCOPE Device Driver, the netANALYZER Scope software, documentation and programming examples.

#### Auto boot menu of the netANALYZER Scope DVD

In the auto boot menu you can select:

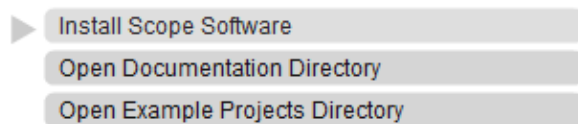


Figure 1: Auto boot menu of the product DVD

#### Driver and software

If you select in the auto boot menu **Install Scope Software**, in the next dialog you can select which of the following software components you want to install:

- Ethernet Device Configuration Tool,
- License manger,
- netANALYZER / netSCOPE Device Driver,
- netANALYZER Remote Access Window client,
- WinPCAP,
- netANALYZER.

The netANALYZER Scope x 64 component is installed by default.

#### Documentation and examples

Via the auto boot menu you can access the storage directories with the documentation or the sample projects on the DVD.

## 4.2 First-Time Installation

This section describes how to install the software and the driver for netANALYZER Scope when netANALYZER Scope is not already installed on your PC.

### Installation notes



#### Note:

- After some installation steps, e. g. after the installation of the .NET Framework, a restart of the PC may be required, before the other software components can be installed.
- If necessary, an Internet connection is required during installation if some of the required Windows components are not yet available.

### Step 1: Downloading the netANALYZER Scope DVD

- Download the netANALYZER Scope DVD as a ZIP file from the website <http://www.hilscher.com> (under **Products**, directly with the information on your product) to the local hard disk of your PC.
- Unzip the zip file.

### Step 2: Starting boot start menu and installation dialog

- Close all programs!
- Double-click in the root directory of the DVD to the file *netANALYZER scope-2.exe*, to open the autostart menu.
- The start screen of the auto boot menu is displayed with the following options:

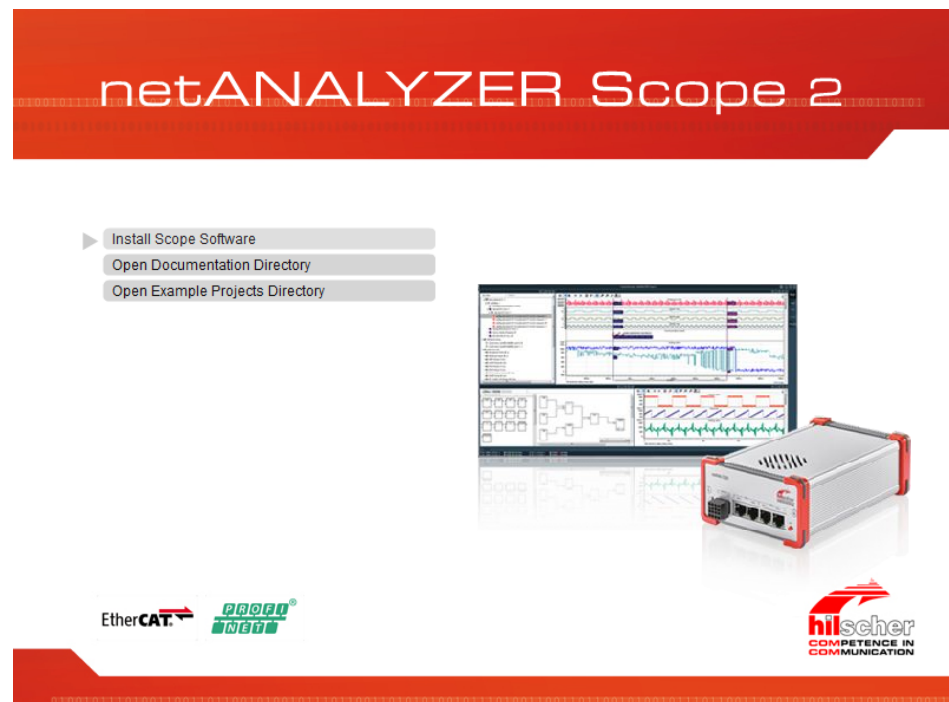


Figure 2: Auto boot menu of the product DVD

- Select **Install Scope Software**.

➤ The **netANALYZER Scope** installation dialog appears.

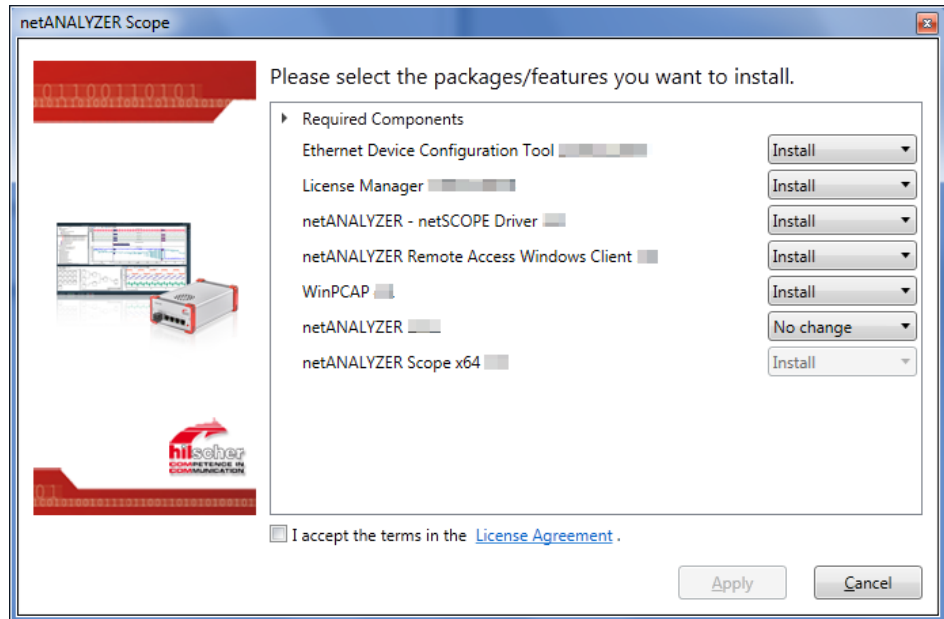


Figure 3: Installation dialog netANALYZER Scope - first-time installation

- For each installation component, the version available on the DVD is indicated.
- For those components not yet installed on the PC **Install** appears. For the analysis software netANALYZER, you must manually select whether to install it.

### Step 3: Selecting settings for components



**Note:**

For the analyzer device NANL- B500G-RE the **netANALYZER Remote Access Windows client** and the program **Ethernet Device Configuration** must be installed.

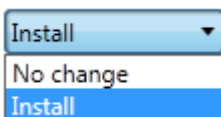


**Important:**

Make sure to install the WinPcap driver provided on the DVD, to allow to use your netANALYZER device with a network monitoring program (e. g., Wireshark).

In the installation dialog for each component (package/feature)

- Ethernet Device Configuration Tool,
- License manger,
- netANALYZER / netSCOPE Device Driver,
- netANALYZER Remote Access Window client,
- WinPCAP,
- netANALYZER (default setting “No change”),



you must specify if you want to install the component for the first time on your PC. You can choose **No change** or **Install**.

The netANALZER Scope x 64 component is installed by default. This can not be deselected.

The netANALZER software is no longer maintained and is not installed by default. If you are used to work with this software, you can choose **Install**. For more information, see the section *Which software for which purpose?* [▶ page 3].

- Choose **No change** if you do not want to install a component.
- Select **Install** if you want to install a component.

#### Step 4: Completing license agreement

- Accept terms of agreement: You must check **I accept the terms of the License Agreement..**

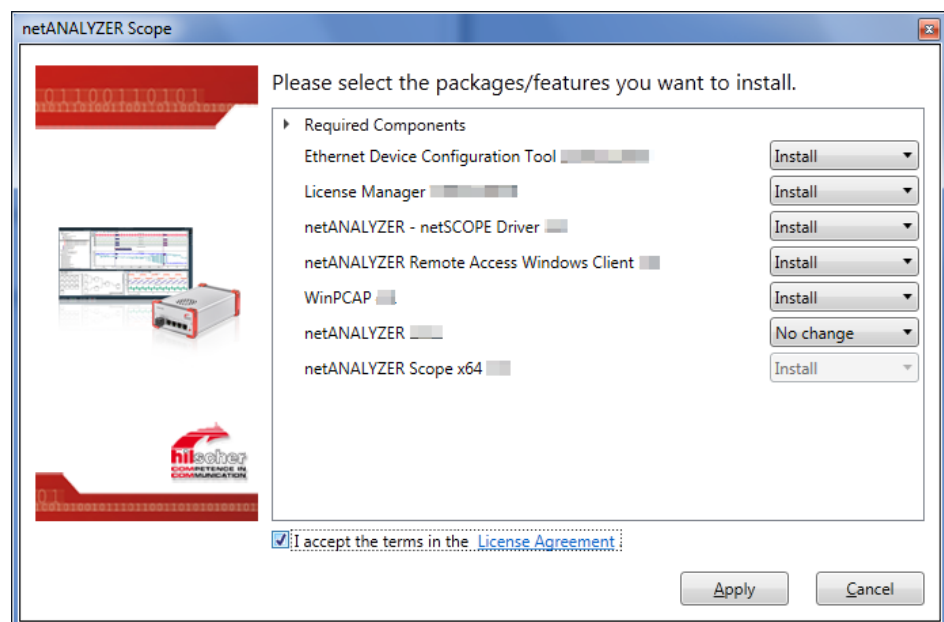


Figure 4: Installation dialog netANALZER Scope - Accepting license agreement

- Via the hyperlink [License Agreement](#) you can view the Hilscher software license agreement.

**Step 5: Performing installation**

- Start with **Apply** the installation of the selected components (packages / features).
- ⇒ The netANALZER Scope query, **Please close all other applications!** appears.

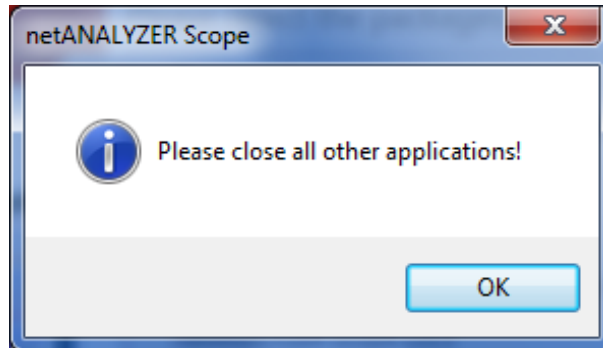


Figure 5: netANALZER Scope query, 'Please close all other applications!'

- Close all other applications and click **OK**.
- ⇒ The Windows safety query **User Account Control: Do you want to allow the following program to make changes to this computer?** appears.
- Click **Yes**.

**Note:**

If you have already installed a version of the WinPcap driver on your PC, a query (with some subsequent dialogs) appears, whether you want to overwrite the version. Override your previous installation and install the WinPcap driver included on the netANALZER Scope DVD. When installing a network monitoring program (such as Wirekshark), make sure that you do not overwrite the WinPcap driver, otherwise the netANALZER device will no longer be available as a recording device on your PC.

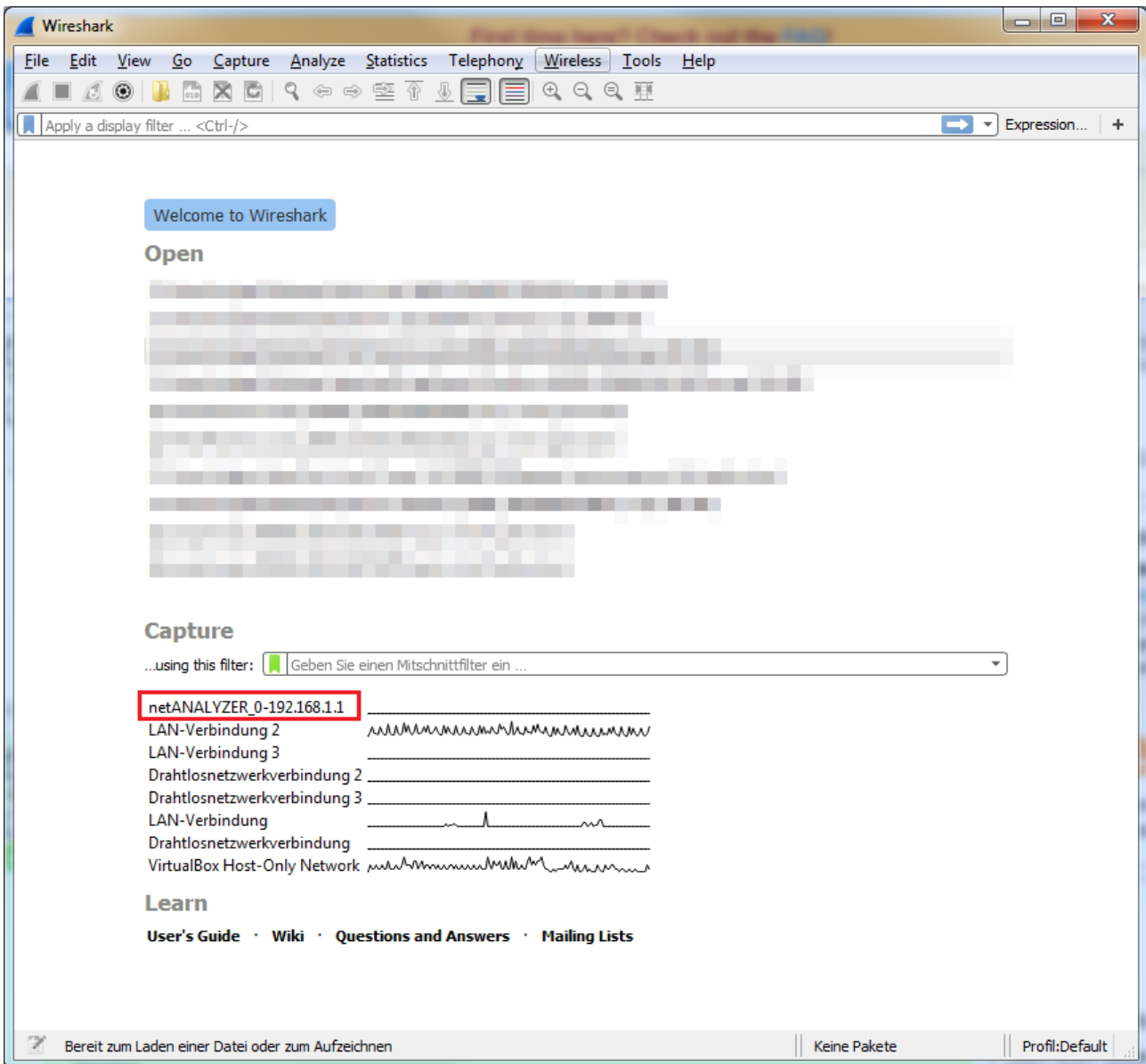


Figure 6: The entry "netANALYZER\_..." appears only if the WinPcap driver from the netANALYZER Scope DVD is installed.

⇒ Your selected components are installed.

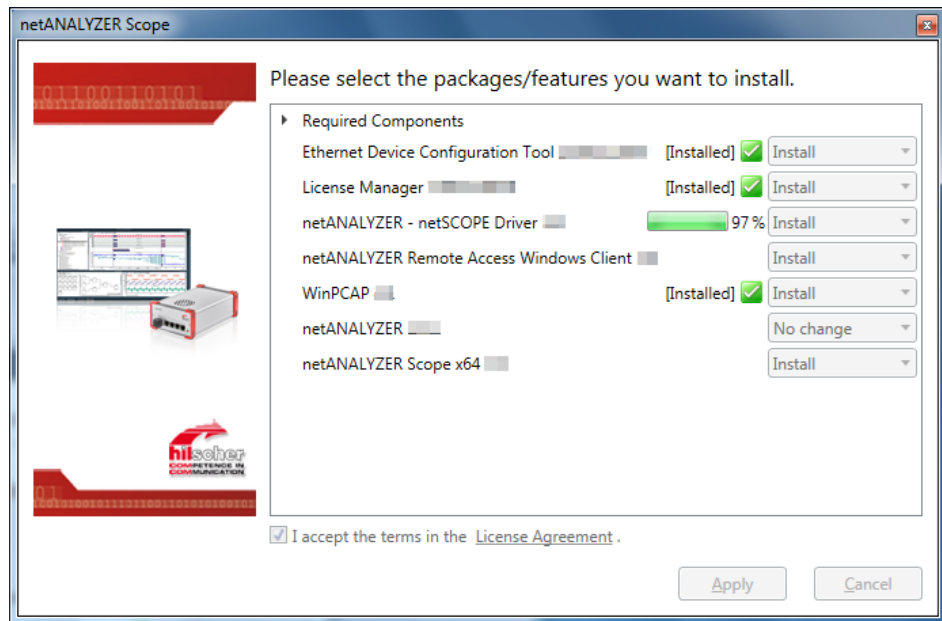


Figure 7: Installation dialog netANALZER Scope - the installation of the selected components is running

➤ The installation is complete.

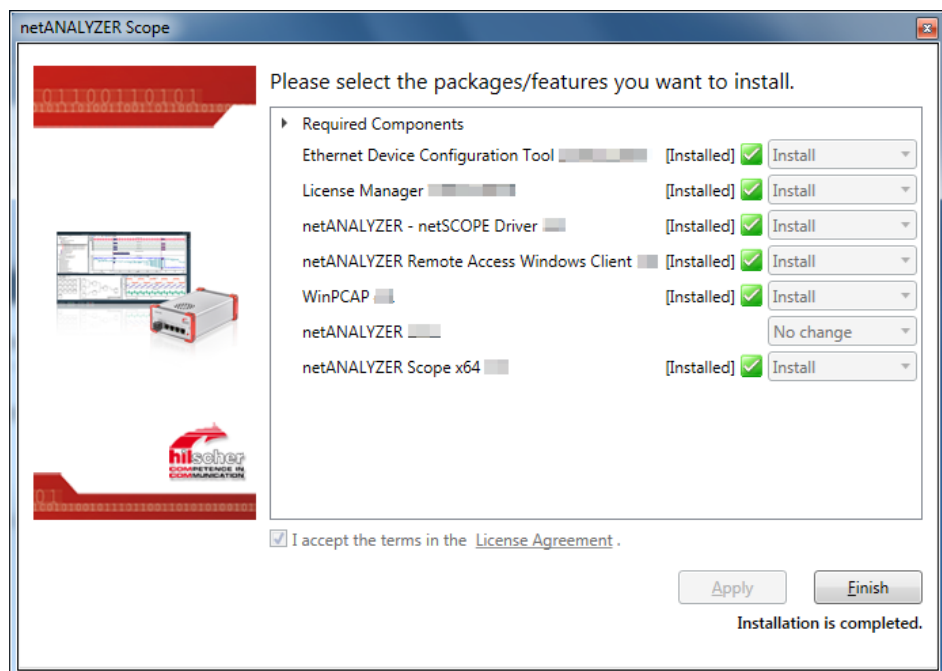


Figure 8: Installation dialog netANALZER Scope - Installation of the selected components completed

➤ Click **Finish**.

## 4.3 Update installation

This section describes how to update the installation for netANALYZER Scope components that are installed in a previous version on your PC or how to install single components later.

### Step 1: Downloading the netANALYZER Scope DVD

- Download the netANALYZER Scope DVD as a ZIP file from the website <http://www.hilscher.com> (under **Products**, directly with the information on your product) to the local hard disk of your PC.
- Unzip the zip file.

### Step 2: Starting boot start menu and installation dialog

- Close all programs!
- Double-click in the root directory of the DVD to the file *netANALYZER scope-2.exe*, to open the autostart menu.
- The start screen of the auto boot menu is displayed with the following options:

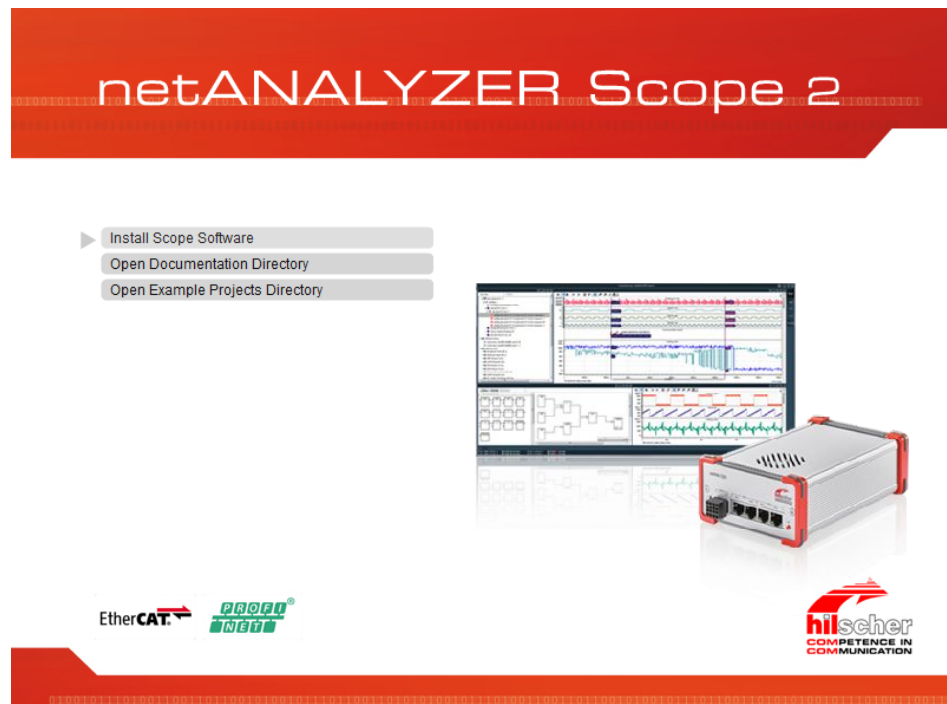


Figure 9: Auto boot menu of the product DVD

- Select **Install Scope Software**.
- The **netANALYZER Scope** installation dialog appears.



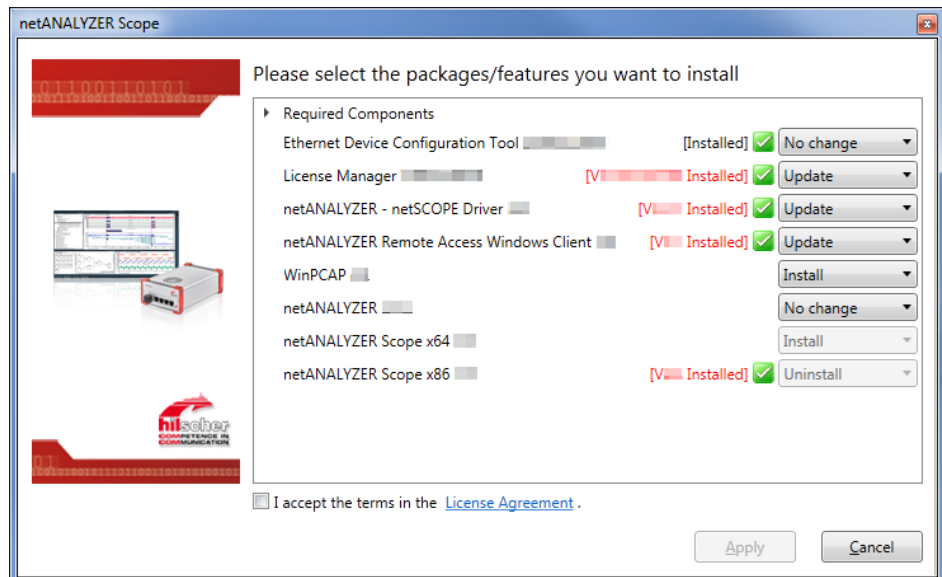


Figure 10: Installation dialog netANALYZER Scope - Installation update

- ⇒ For each installation component, the version available on the DVD is indicated.
- ⇒ For components that are installed in the current version on the PC, **No change** appears and in green text the version is indicated.
- ⇒ For components installed in a previous version on your PC **Update** appears and in red text is indicated which version is installed on the PC.
- ⇒ For those components not yet installed on the PC **Install** appears.

### Step 3: Selecting settings for components

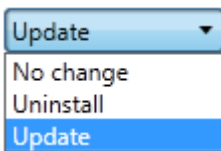


#### Note:

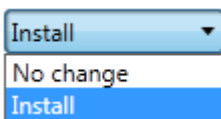
For the analyzer device NANL- B500G-RE the **netANALYZER Remote Access Windows client** and the program **Ethernet Device Configuration** must be installed.

In the installation dialog for each component (package/feature)

- Ethernet Device Configuration Tool,
- License manger,
- netANALYZER / netSCOPE Device Driver,
- netANALYZER Remote Access Window client,
- WinPCAP,
- netANALYZER (default setting “No change”),



you must specify whether you want to make any change in the installation or if you want to uninstall software components (or update if necessary). You can select **No change** or **Uninstall** (and optionally **Update**).



OR for components not yet installed, you can select **No change** or **Install**.

On a PC with 64-bit architecture, an existing version of netANALYZER Scope x86 is uninstalled by default, and the netANALYZER Scope x 64 component is installed by default.

- Select **No change** if you do not want to install, update or uninstall a component.
- Select **Uninstall** if you want to uninstall a component. For more information, see the section *Uninstalling* [▶ page 29].
- If necessary, select **Update** if you want to update a component.
- Select **Install** if you want to install a component for the first time.

**Step 4: Completing license agreement**

- Accept terms of agreement: You must check **I accept the terms of the License Agreement..**

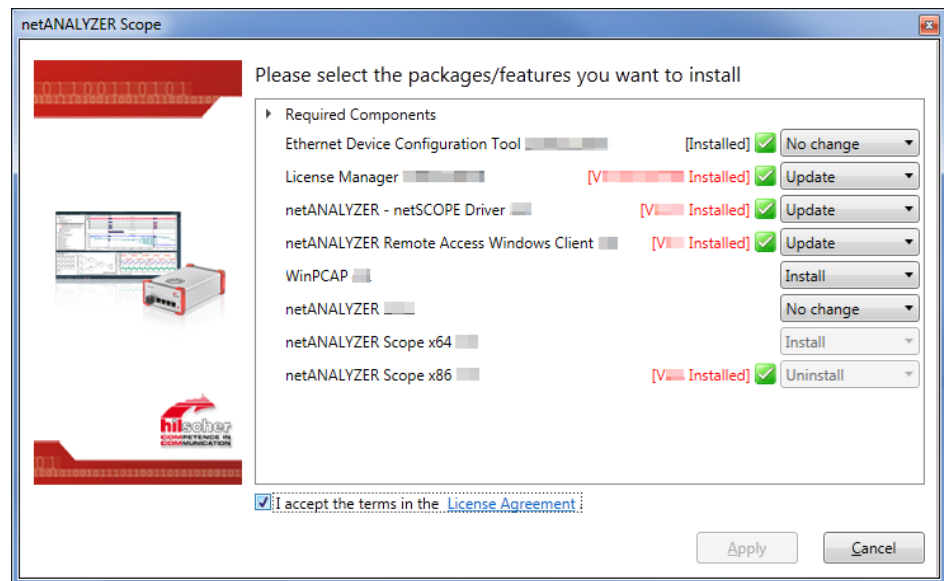


Figure 11: Installation dialog netANALZER Scope - Accepting license agreement

- Via the hyperlink [License Agreement](#) you can view the Hilscher software license agreement.

**Step 4: Performing the installation or update**

- Start with **Apply** the installation or update of the selected components (packages/features).
- The netANALZER Scope query, **Please close all other applications!** appears.

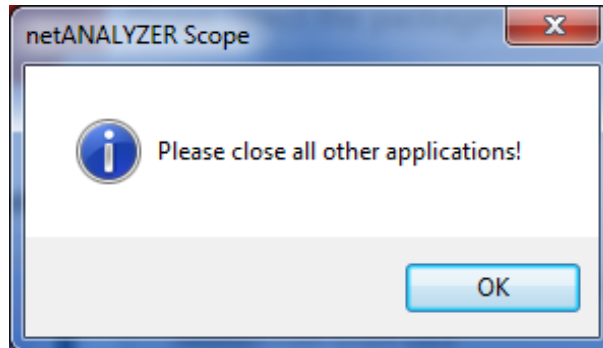


Figure 12: netANALZER Scope query, 'Please close all other applications!' appears.

- Close all other applications.
- The Windows safety query **User Account Control: Do you want to allow the following program to make changes to this computer?** appears.
- Click Yes.
- Your selected components are installed/updated.
- The installation/update is complete.

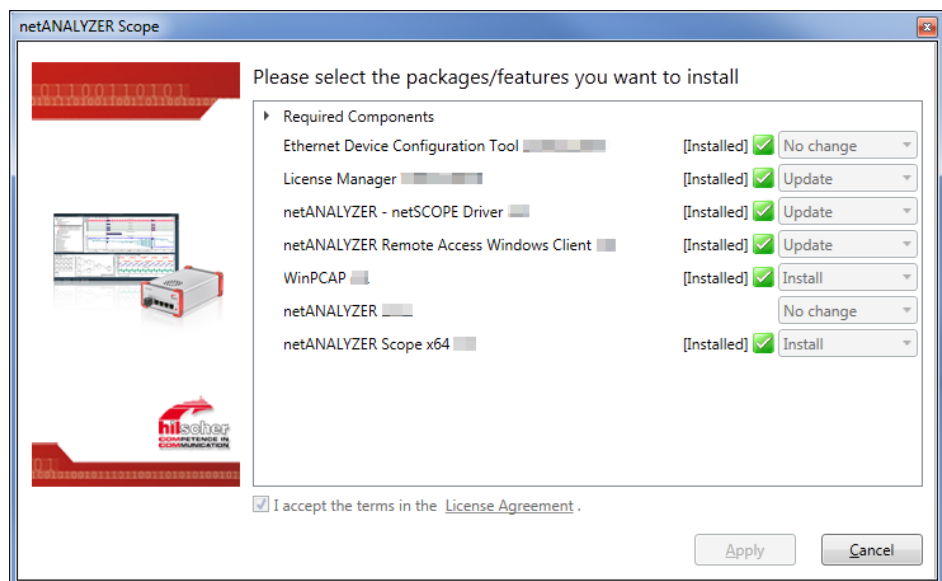


Figure 13: Installation dialog netANALZER Scope - Installation/update of the selected components completed

- Click **Finish**.

## 4.4 Uninstalling

This section describes how to permanently remove the netANALYZER Scope software and the driver from your PC.



### Note:

If you want to upgrade your netANALYZER Scope software or the driver, follow the steps as described in the section *Update installation* [▶ page 24].

### Step 1: Downloading the netANALYZER Scope DVD

- Download the netANALYZER Scope DVD as a ZIP file from the website <http://www.hilscher.com> (under **Products**, directly with the information on your product) to the local hard disk of your PC.
- Unzip the zip file.

### Step 2: Starting boot start menu and installation dialog

- Close all programs!
- Double-click in the root directory of the DVD to the file *netANALYZER scope-2.exe*, to open the autostart menu.
- The start screen of the auto boot menu is displayed with the following options:

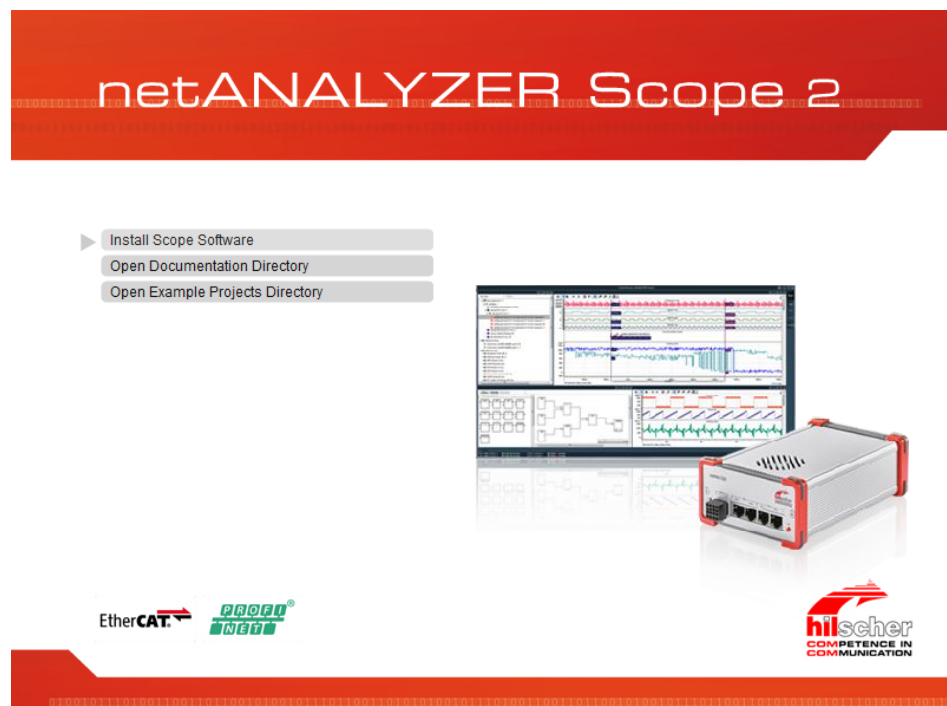


Figure 14: Auto boot menu of the product DVD

- Select **Install Scope Software**.
- The **netANALYZER Scope** installation dialog appears.

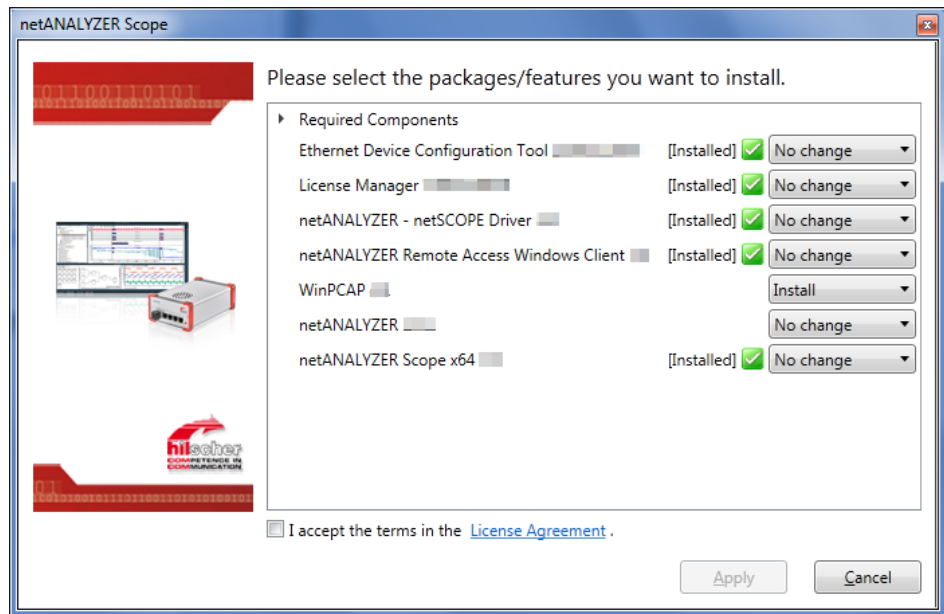


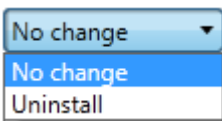
Figure 15: Installation dialog netANALYZER Scope - Example of an existing installation that shall be removed

➤ For each installation component, the version available on the DVD and optionally the version installed on the PC is indicated.

### Step 3: Selecting settings for components

In the installation dialog for each component (package/feature)

- Ethernet Device Configuration Tool,
- License manger,
- netANALYZER / netSCOPE Device Driver,
- netANALYZER Remote Access Window client,
- netANALYZER (default setting “No change”),
- netANALYZER,
- netANALYZER Scope x 64



that you completely want to remove from your PC, you must specify if you want to uninstall this component. You can select **No change** or **Uninstall** (and optionally **Update not shown in picture**).

- Select **No change** if you do not want to update or uninstall a component.
- Select **Uninstall** if you want to uninstall a component.

You can uninstall the WinPcap driver only via the Windows Control Panel (**Start > Control Panel > Uninstalling Programs**).

#### Step 4: Completing license agreement

- Accept terms of agreement: You must check **I accept the terms of the License Agreement..**

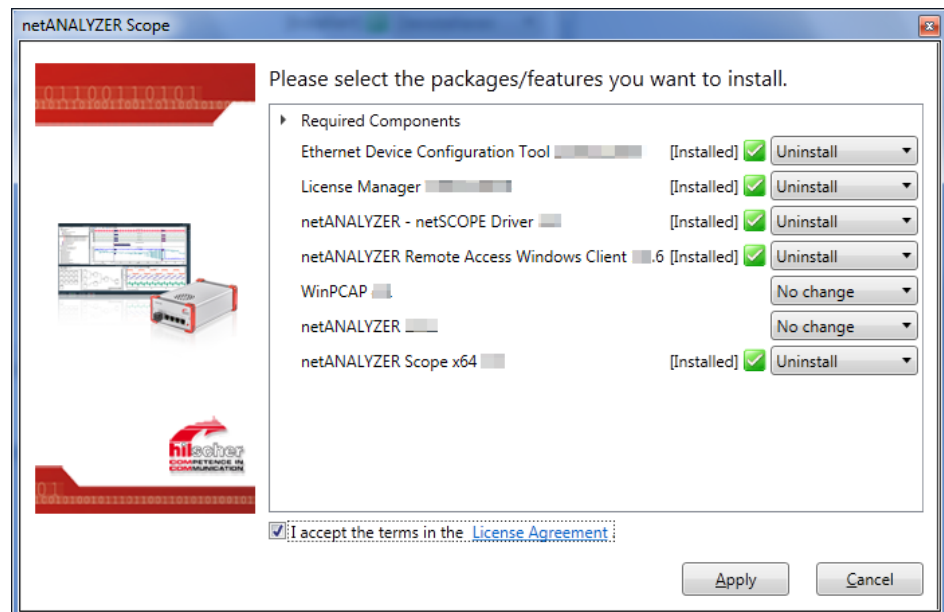


Figure 16: Installation dialog netANALYZER Scope - Accepting license agreement

- Via the hyperlink [License Agreement](#) you can view the Hilscher software license agreement.

#### Step 5: Uninstalling

- Start with **Apply** the uninstallation of the selected components (packages/features).
- The netANALYZER Scope query, **Please close all other applications!** appears.

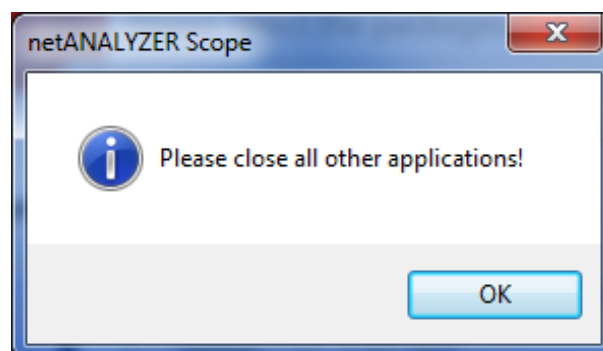


Figure 17: netANALYZER Scope query, 'Please close all other applications!' appears.

- Close all other applications.
- The Windows safety query **User Account Control: Do you want to allow the following program to make changes to this computer?** appears.
- Click **Yes**.
- The selected components are removed from your PC.

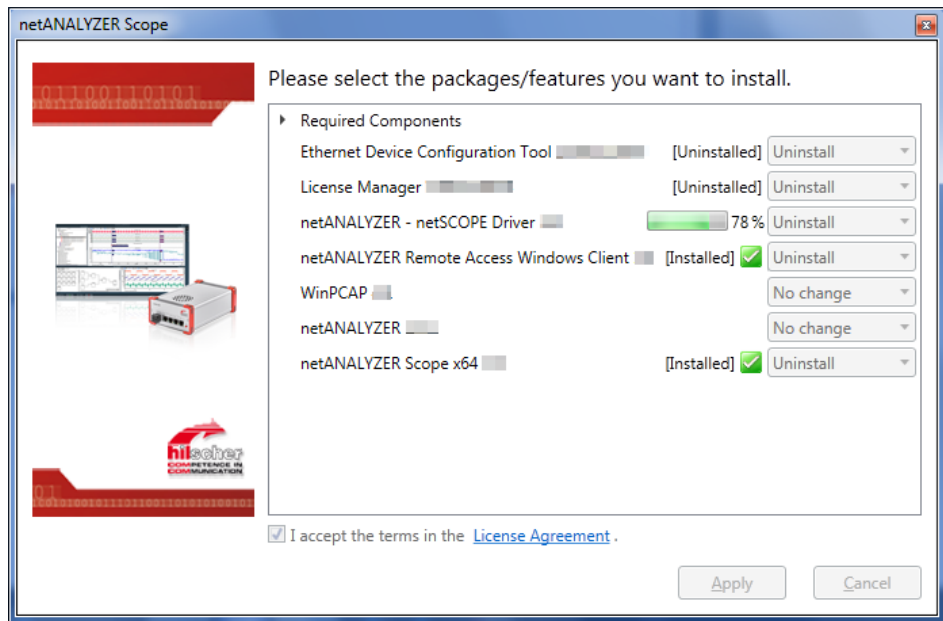


Figure 18: Installation dialog netANALYZER Scope - the uninstallation of the selected components is running

➔ The uninstallation is complete.

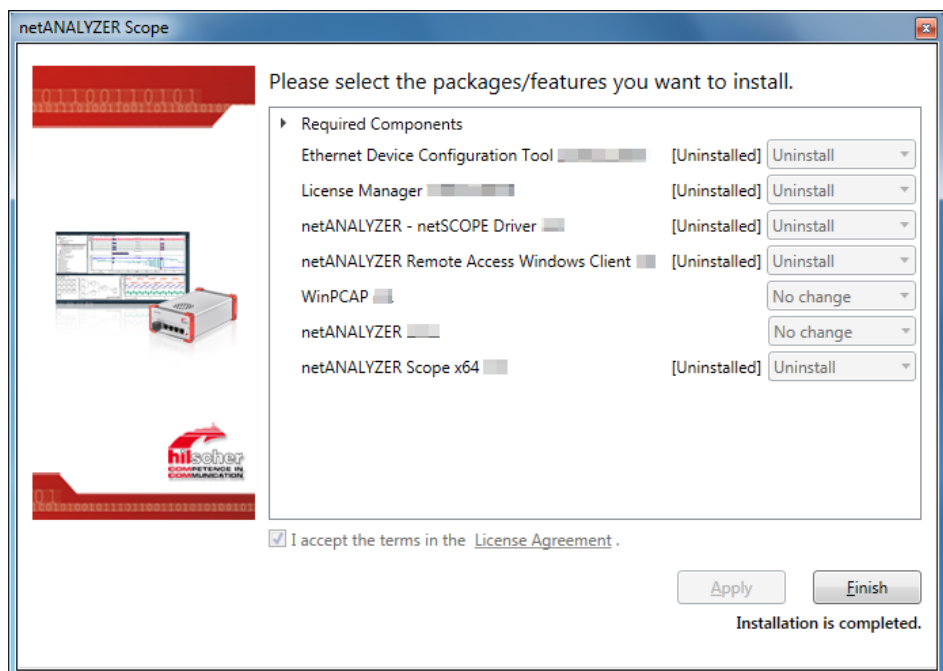


Figure 19: Installation dialog netANALYZER Scope - Uninstallation of the selected components completed

➤ Click **Finish**.



## List of figures

Figure 1:	Auto boot menu of the product DVD.....	17
Figure 2:	Auto boot menu of the product DVD.....	18
Figure 3:	Installation dialog netANALYZER Scope - first-time installation.....	19
Figure 4:	Installation dialog netANALYZER Scope - Accepting license agreement .....	20
Figure 5:	netANALYZER Scope query, 'Please close all other applications!' .....	21
Figure 6:	The entry "netANALYZER_ ..." appears only if the WinPcap driver from the netANALYZER Scope DVD is installed. ....	22
Figure 7:	Installation dialog netANALYZER Scope - the installation of the selected components is running .....	23
Figure 8:	Installation dialog netANALYZER Scope - Installation of the selected components completed .....	23
Figure 9:	Auto boot menu of the product DVD.....	24
Figure 10:	Installation dialog netANALYZER Scope - Installation update .....	25
Figure 11:	Installation dialog netANALYZER Scope - Accepting license agreement .....	27
Figure 12:	netANALYZER Scope query, 'Please close all other applications!' appears.....	28
Figure 13:	Installation dialog netANALYZER Scope - Installation/update of the selected components completed .....	28
Figure 14:	Auto boot menu of the product DVD.....	29
Figure 15:	Installation dialog netANALYZER Scope - Example of an existing installation that shall be removed .....	30
Figure 16:	Installation dialog netANALYZER Scope - Accepting license agreement .....	31
Figure 17:	netANALYZER Scope query, 'Please close all other applications!' appears.....	31
Figure 18:	Installation dialog netANALYZER Scope - the uninstallation of the selected components is running .....	32
Figure 19:	Installation dialog netANALYZER Scope - Uninstallation of the selected components completed .....	32

## List of tables

Table 1:	List of revisions .....	4
Table 2:	Directory structure of the netANALYZER Scope DVD.....	6
Table 3:	Installation files for software, drivers on the DVD .....	7
Table 4:	Installed files (software application, firmware, driver, toolkit).....	7
Table 5:	Documentations on the netANALYZER Scope DVD .....	8
Table 6:	Overview Installation netANALYZER Scope software, or netANALYZER software	15
Table 7:	Overview software and driver .....	16

## Glossary

<b>Ethernet Device Configuration</b>	Hilscher Software tool used eg for the netANALYZER device NANL-B500G-RE to configure the IP address and which is used for the modes "static IP address" or "DHCP Client"
<b>NANL-B500G-RE</b>	netANALYZER portable device with Gigabit Ethernet PC interface for real-time Ethernet and all 10/100BASE-T Ethernet networks
<b>NANL-C500-RE</b>	netANALYZER PC card with PCI interface for real-time Ethernet and all 100BASE-T Ethernet networks
<b>netANALYZER</b>	system for recording and analyzing data traffic in Ethernet networks which has been developed and is manufactured by Hilscher, consisting of a special hardware (netANALYZER card or portable device) and software
<b>netANALYZER Scope</b>	Intelligent high level analysis software for recording and analyzing EtherCAT and PROFINET networks together with the netANALYZER hardware (card or portable device)
<b>WinPcap</b>	Library WinPcap; <a href="http://www.winpcap.org/">http://www.winpcap.org/</a>
<b>Wireshark</b>	Network monitoring program Wireshark; <a href="http://www.wireshark.org">http://www.wireshark.org</a>

# Contacts

## HEADQUARTERS

### Germany

Hilscher Gesellschaft für  
Systemautomation mbH  
Rheinstrasse 15  
65795 Hattersheim  
Phone: +49 (0) 6190 9907-0  
Fax: +49 (0) 6190 9907-50  
E-mail: [info@hilscher.com](mailto:info@hilscher.com)

### Support

Phone: +49 (0) 6190 9907-99  
E-mail: [de.support@hilscher.com](mailto:de.support@hilscher.com)

## SUBSIDIARIES

### China

Hilscher Systemautomation (Shanghai) Co. Ltd.  
200010 Shanghai  
Phone: +86 (0) 21-6355-5161  
E-mail: [info@hilscher.cn](mailto:info@hilscher.cn)

### Support

Phone: +86 (0) 21-6355-5161  
E-mail: [cn.support@hilscher.com](mailto:cn.support@hilscher.com)

### France

Hilscher France S.a.r.l.  
69500 Bron  
Phone: +33 (0) 4 72 37 98 40  
E-mail: [info@hilscher.fr](mailto:info@hilscher.fr)

### Support

Phone: +33 (0) 4 72 37 98 40  
E-mail: [fr.support@hilscher.com](mailto:fr.support@hilscher.com)

### India

Hilscher India Pvt. Ltd.  
Pune, Delhi, Mumbai  
Phone: +91 8888 750 777  
E-mail: [info@hilscher.in](mailto:info@hilscher.in)

### Italy

Hilscher Italia S.r.l.  
20090 Vimodrone (MI)  
Phone: +39 02 25007068  
E-mail: [info@hilscher.it](mailto:info@hilscher.it)

### Support

Phone: +39 02 25007068  
E-mail: [it.support@hilscher.com](mailto:it.support@hilscher.com)

### Japan

Hilscher Japan KK  
Tokyo, 160-0022  
Phone: +81 (0) 3-5362-0521  
E-mail: [info@hilscher.jp](mailto:info@hilscher.jp)

### Support

Phone: +81 (0) 3-5362-0521  
E-mail: [jp.support@hilscher.com](mailto:jp.support@hilscher.com)

### Korea

Hilscher Korea Inc.  
Seongnam, Gyeonggi, 463-400  
Phone: +82 (0) 31-789-3715  
E-mail: [info@hilscher.kr](mailto:info@hilscher.kr)

### Switzerland

Hilscher Swiss GmbH  
4500 Solothurn  
Phone: +41 (0) 32 623 6633  
E-mail: [info@hilscher.ch](mailto:info@hilscher.ch)

### Support

Phone: +49 (0) 6190 9907-99  
E-mail: [ch.support@hilscher.com](mailto:ch.support@hilscher.com)

### USA

Hilscher North America, Inc.  
Lisle, IL 60532  
Phone: +1 630-505-5301  
E-mail: [info@hilscher.us](mailto:info@hilscher.us)

### Support

Phone: +1 630-505-5301  
E-mail: [us.support@hilscher.com](mailto:us.support@hilscher.com)